

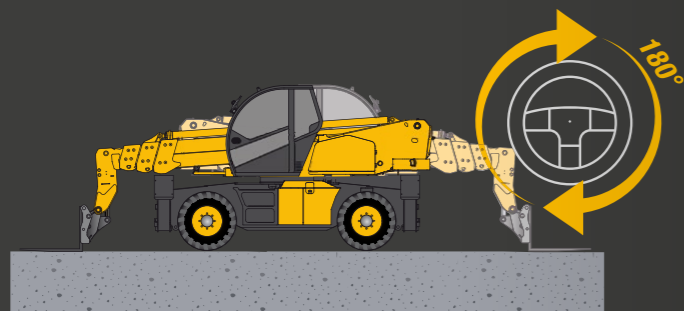


TECHNOLOGICAL AND COMFORTABLE



TOTAL VISIBILITY

- Large windows and panoramic rooftop
- Integrated LED work lights
- Perimeter lights, on the boom and on the boom head*
- Up to 3 cameras: rear, right side and boom



DTS

- The Dieci Telematic System allows the Dieci service team to interact with the machine remotely*
- It telematically collects and sends operational data for easier and more comprehensive monitoring, diagnostics and maintenance
- Machine and operators protected from theft and accidents thanks to GSM and GPS connections



PEGASUS

40.16 | 40.18 | 45.30 | 50.25 | 50.26 | 60.16 | 60.21

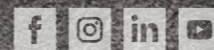
TECHNICAL DATA

| VEHICLE MODEL | PEGASUS 50.25 | PEGASUS 60.16 | PEGASUS 60.21 | PEGASUS 50.26 | PEGASUS 45.30 |
|------------------------|--------------------|--------------------|--------------------|--------------------|--------------------|
| ENGINE | Perkins | Perkins | Perkins | FPT | FPT |
| PEAK POWER | 100 kW (134 HP) | 100 kW (134 HP) | 100 kW (134 HP) | 127 kW (170 HP) | 127 kW (170 HP) |
| EMISSION STANDARD | Stage V/Tier 4f | Stage V/Tier 4f | Stage V/Tier 4f | Stage IV/Tier 4f | Stage IV/Tier 4f |
| MAXIMUM SPEED * | 40 km/h (24,9 mph) | 40 km/h (24,9 mph) | 40 km/h (24,9 mph) | 40 km/h (24,9 mph) | 40 km/h (24,9 mph) |
| MAXIMUM CAPACITY | 4999 kg (11021 lb) | 6000 kg (13228 lb) | 6000 kg (13228 lb) | 5000 kg (11023 lb) | 4500 kg (9921 lb) |
| MAXIMUM LIFTING HEIGHT | 24,10 m (79,1 ft) | 16,20 m (53,1 ft) | 20,50 m (67,3 ft) | 25,7 m (84,3 ft) | 29,6 m (97,1 ft) |
| TURRET ROTATION | Continuous 360° | Continuous 360° | Continuous 360° | Continuous 360° | Continuous 360° |

| VEHICLE MODEL | PEGASUS 40.16 - 400° | PEGASUS 40.18 - 400° |
|------------------------|----------------------|----------------------|
| ENGINE | Perkins | Perkins |
| PEAK POWER | 85,9 kW (115 HP) | 85,9 kW (115 HP) |
| EMISSION STANDARD | Stage V/Tier 4f | Stage V/Tier 4f |
| MAXIMUM SPEED * | 30 km/h (18,6 mph) | 30 km/h (18,6 mph) |
| MAXIMUM CAPACITY | 4000 kg (8818 lb) | 4000 kg (8818 lb) |
| MAXIMUM LIFTING HEIGHT | 15,70 m (51,5 ft) | 18,00 m (59,1 ft) |
| TURRET ROTATION | Limited 400° | Limited 400° |

DIECI

www.dieci.com



beyond all limits
all in one vehicle

NEW PEGASUS RANGE



DIECI
www.dieci.com

NEW CONSTRUCTION

THE CONSTRUCTION SITE IN YOUR HANDS

The productivity of the vehicles must be improved in order to reduce operating costs at the construction sites. Dieci meets the new needs with a series of vehicles that evolve the Construction range: more **versatile, performing, durable, reliable, intuitive** to operate, always **safe** and practical to maintain.

The **Pegasus** family exceeds all limits for loading capacity and outreach: the continuous rotation of the turret* works on an operating area up to 2122 m². Using different equipment it can work like a telehandler, a crane and an aerial platform: **all in one vehicle**.

HANDY AND INTUITIVE



HIGH TECHNOLOGY, CONTROL AND SECURITY

- **Enhanced Soft Motion:** more maneuverable boom movements
- **Controls automatically adapted with reverse drive:** steering wheel, axle inclination, wheel alignment*
- **Load indicator on the display:** configuration, outriggers, boom angle and extension, working height, equipment and capacity
- **Outriggers automatic recovery***
- **Remote control** with display*

VERSATILE AND MULTIFUNCTIONAL



READY FOR EVERYTHING

- **Automatic equipment recognition:** preset capacity diagram
- **Hydraulic accessories lock:** double cylinder, maximum stability
- **Buckets** for aggregates, **truck mixers** for concrete, floating **forks and fork carriers**, centring **handlers**

BETTER THAN A CRANE

- **Maximum stability** on any ground
- High capacity **winch**
- **Jib cranes with winch** for maximum distances

BETTER THAN A BOOM LIFT

- **Up to 37 meters** away
- **Extensible baskets** up to 6 meters
- **Positive-negative boom**

POWERFUL AND ECOLOGICAL



ELECTRONIC EVOLUTION

- **Three engine sizes, up to 170 hp:** optimized output and efficiency
- **High torque** to ensure **maximum performance**
- Electronically controlled engine: **limited fuel consumption** and **emissions**

CLEAN POWER

- Maximum speed **40 km/h***
- **Stage V/Tier 4f***
- **DOC+SCR** catalysts
- **DPF** filter*
- **AdBlue** tank

* Some functions are optional and/or limited to some models only. contact the sales network for more information.

STABLE AND SAFE



AUTOMATION SAFETY

- **Self-leveling:** the machine is automatically leveled for any ground conformation
- **Easy Work system:** the load capacity adjusts automatically according to the outriggers*
- **Anti Crash system:** zero collisions and maximum safety for operators in the basket
- **Arm too high** function: travel speed limited automatically when the boom is raised*
- **Rear axle locking:** oscillation automatically locked with boom raised and turret rotated

